

Yosemite

Bridalveil Creek Group Campground

July 22-26, 2010



Explore the breathtaking beauty and magnificent natural wonder of Yosemite National Park with Great Outdoors. This trip will bring together lovers of the great outdoors to have a gay ole' time and explore our country's premier national park. The park contains the first land that was set aside for preservation and public use by the US federal government.

We will be camping at Bridalveil Creek group campground, which is in Yosemite's "high country" at an elevation of 7,200 feet. We'll be 3,000 feet above the floor of the Yosemite Valley – about a 45-minute drive from Curry Village. Although removed from the crowds of the valley, we'll only be a short jaunt away and it will be an easy day trip to explore the beautiful hikes of the valley as well as the sites of Yosemite Village, Curry Village, and the Happy Isles Nature Center.

Activities will include: hiking, backpacking, fishing, and exploring the strikingly beautiful sights in the area. We will also be playing a variety of games and there will even be an arts-and-crafts table. There will be a "summer camp" feel with lots of (optional) activities.... Feel free to participate with the group or explore on your own.

Optional backpacking excursion: Up to 12 lucky campers will be able to participate in a one-night (in-and-out) moderately strenuous backpacking excursion to [Ostrander Lake](#), which is a 7.5 mile hike from our campground (6.2 miles from the trailhead). Starting at an elevation of 7,200 feet, we'll ascend to 8,500 feet and camp at Lost Bear Meadow for one night. This side-trip is perfect for a first-time backpacker. Our route takes us through the Southern section of the park, with incredible views of Mt. Clark, Red Peak, and the Buena Vista Range. We'll camp near scenic Ostrander Lake, with an optional afternoon hike to Hart Lakes. "Turbo" hikers may want to do this as a day hike (about 15 miles roundtrip from the trailhead). (Note: [bear-resistant food canisters](#) are required. They can be rented at the park or through your neighborhood wilderness supply store.)

Carpooling is necessary!

We are limited in the number of automobiles we are allowed. For Thursday, Friday, and Saturday, we have two group sites reserved, and each is allowed 5 cars (10 cars total). For any campers who want to stay Sunday, we only have one site reserved (Site B), meaning we will only be allowed to have 5 cars that night.

Sorry, no dogs or RVs.

Facilities: Bridalveil Creek campground has water and flush toilets, but there are no showers. The closest showers are in the valley, either at Curry Village or Housekeeping

Camp. In terms of supplies, there is a small snack shop at Glacier Point, a market in Wawona (8 miles) or a full grocery store in the valley at Curry Village.

What to bring:

- Tent, sleeping bag, and sleeping pad
- Food. As noted, there are no stores in the immediate vicinity. There is a grocery store in Curry Village (45 minute drive away). (Continental breakfast will be provided on Friday and Saturday.)
- Firewood
- Insect repellent. This is summer in the Sierras. There will be mosquitoes and bugs!
- Layered clothing (warm/hot days, cool nights, possible rain showers)
- The “10 Essentials” are always a good idea when camping:
 1. Map
 2. Compass (optional GPS)
 3. Sunglasses and sunscreen
 4. Extra food and water
 5. Extra clothes
 6. Headlamp / flashlight
 7. First aid kit
 8. Fire starter
 9. Matches
 10. Knife
- A sense of fun, adventure, and wonder!

Weather: Expect warm to hot days, with occasional rain (usually as afternoon thundershowers, especially at the higher elevations).

Average temps for July (Yosemite Valley): 90°F / 54°F

High country (including Bridalveil Creek) is typically 10-20 degrees cooler

Astronomy: Saturday, July 24th (Lunar schedule will vary considerably other days)

Sunrise: 5:52 am

Moonrise: 7:25 pm

Sunset: 8:10 pm

Moonset: 4:31 am

Price: \$35 for [Great Outdoors](#) members, or \$55 for non-members (which will include a one-year membership). This will include the camping fees for all nights, as well as some “incidentals” that will be thrown in for fun (including continental breakfast for two mornings, and an “afternoon” tea for one day). The price will NOT include the park entrance fee (\$20 per vehicle.... Another great reason to carpool!).

Suggested Schedule:

<u>Thursday, July 22</u>	Arrive at Bridalveil Creek campground anytime after Noon Afternoon “tea” at 6pm. Meet-and-mingle.
<u>Friday, July 23</u>	Continental Breakfast at 8:00am Optional: Backpackers/ hikers to Ostrander Lake leave by 9:00am Arrive at Ostrander Lake around Noon-1:00pm Optional day hike to Hart Lakes
<u>Saturday, July 24</u>	Continental breakfast Backpackers will return to Bridalveil campground by lunch. Potluck / group dinner at 6pm. Group cooking / instruction by Sean Group excursion to Glacier Point to watch the sunset (around 8pm)
<u>Sunday, July 25</u>	Some people <u>may choose to leave</u> on Sunday. If you are, then you are still welcome to <u>join us for the brunch</u> at the Wawona Hotel. And if you’re <u>planning to stay</u> for another night, then feel free to go hiking or any of the other activities for the day. Brunch at the Wawona Hotel Optional: Long day-hike. Possible options include the Panorama Trail, 4-mile trail, or Illilouette Falls Group excursion to Glacier Point to watch the sunset (around 8pm) “Self-expression” around the campfire. Campers will be encouraged (but not required) to share something of themselves: a musical instrument, a poem, a story, etc.
<u>Monday, July 26</u>	Pack up and check out!



For more information, contact:

Kyle R.
richards.kyle@gmail.com
(805) 451-8219

Sean D.
seanatyourservice@cox.net
(805) 570-6349

Great Outdoors Trip Registration Form

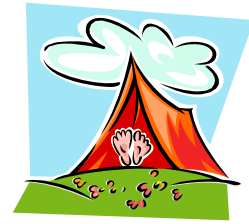
Yosemite (Bridalveil Creek) July 22-26, 2010

Send completed registration form and trip fee
(check payable to "Great Outdoors") to:

Great Outdoors, PO Box 21051, Santa Barbara, CA 93121

and please call Kyle at (805) 451-8219 or e-mail
richards.kyle@gmail.com after you send in your check.

Member \$35; Non-Member \$55



Name (please print) _____

Street Address _____

City/State/Zip _____

G.O. Member # _____ Chapter _____

Phone _____ E-mail (kept confidential) _____

Emergency Contact _____

Relationship _____ Phone _____

Medical Insurance Carrier _____

Group/Policy _____ Physician Phone _____

Transportation: When do you plan to leave home (day/time)? _____

When do you plan to leave Yosemite (day/time)? _____

Driving? YES NO Carpooling with? _____

Interested in the overnight **backpacking excursion to Ostrander Lake**? (limited to 12) YES NO

Health problems/allergies: It is the responsibility of participants to carry on their person a record of significant allergies, medications, and medical history in the event of a medical emergency.

Waiver of Liability, Medical Release and Assignment

I am aware that my participation in Great Outdoors may include potentially hazardous activities and I am voluntarily participating in these activities with that knowledge and the understanding that I will use my own best judgment to avoid injury to myself and others. I agree to follow the directions of the trip leader and abide by the rules of the facility I am using. I hereby release Great Outdoors, including its officers, trail or trip leaders, agents or other persons working with said organization from any liability for injuries, physical or mental, which I may suffer by reason of any participation in these activities. I recognize in waiving this liability that I am assuming sole responsibility for my actions and cannot blame any other person connected with Great Outdoors Inc. I hereby agree to assume full financial responsibility for any and all bills incurred by me for medical treatment as the result of my participation in the Great Outdoors activity. In the event that I am unable to consent to medical care, I hereby authorize the trip leader to consent surgery, as may be best determined under the circumstances.

Signature _____ Date _____

